

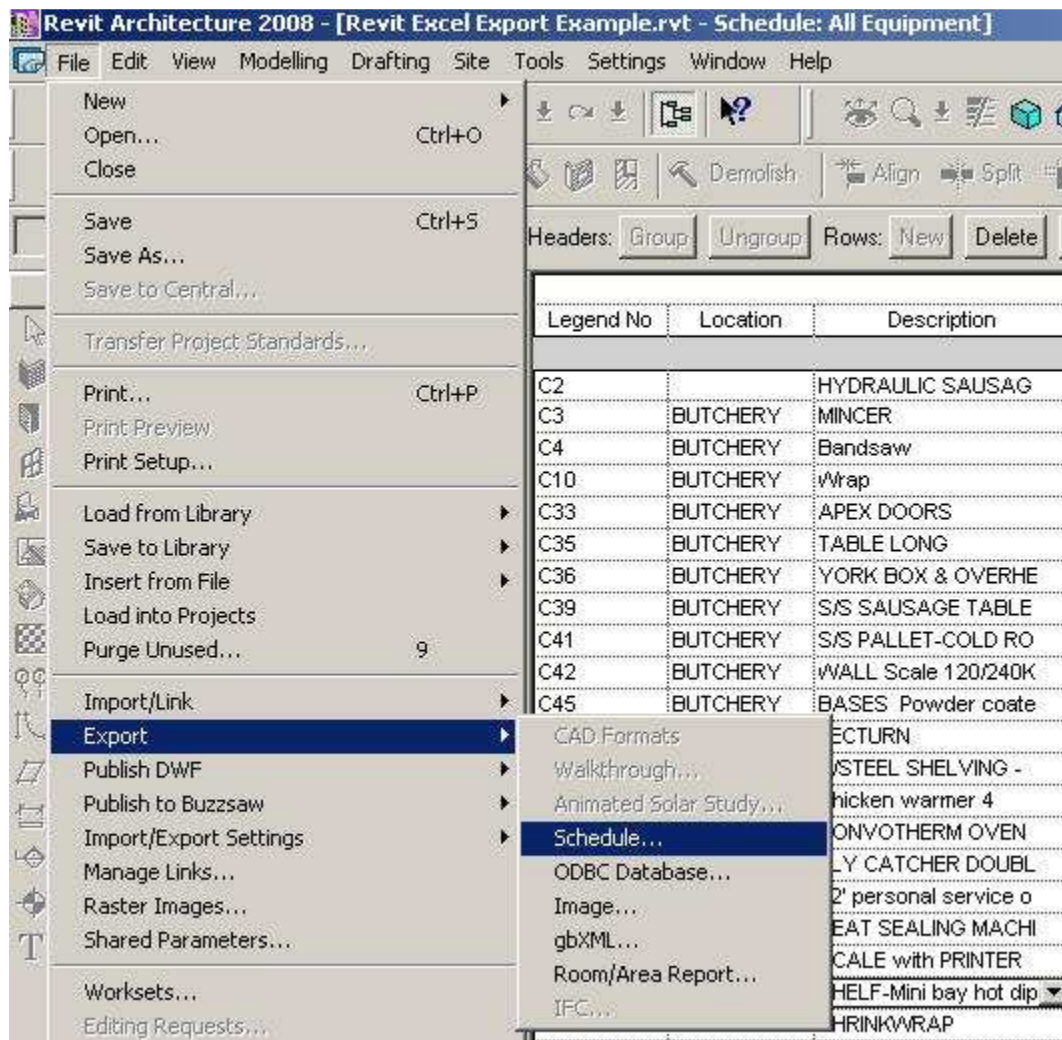
Revit Export To Excel

The objective of this tutorial is to show people how to export their schedules to excel and then be able to utilise the information for further use. This can be extremely useful for you if you need to give information to a QS so that his data is up to date with your model. If you are currently struggling with this, I believe that this will be of great benefit to you.

With each step I will be showing you a screenshot of the process so that you don't have to second guess what I'm trying to explain.

Step 1:

The first thing you need to do is be in your schedule view in order to export your Schedule. Once in your view go to File>Export>Schedule.



Step 2:

You will only be able to save it to a .txt file format so leave it as default in the view. Try and leave the naming process as your schedule name so that you will not get confused with other schedules you have exported as well.



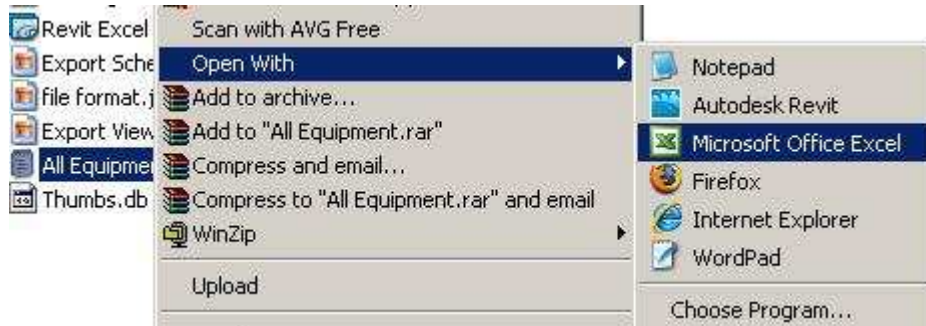
Step 3:

It will then give you an export view. You can leave this to default since I have yet to find a better way to do this.



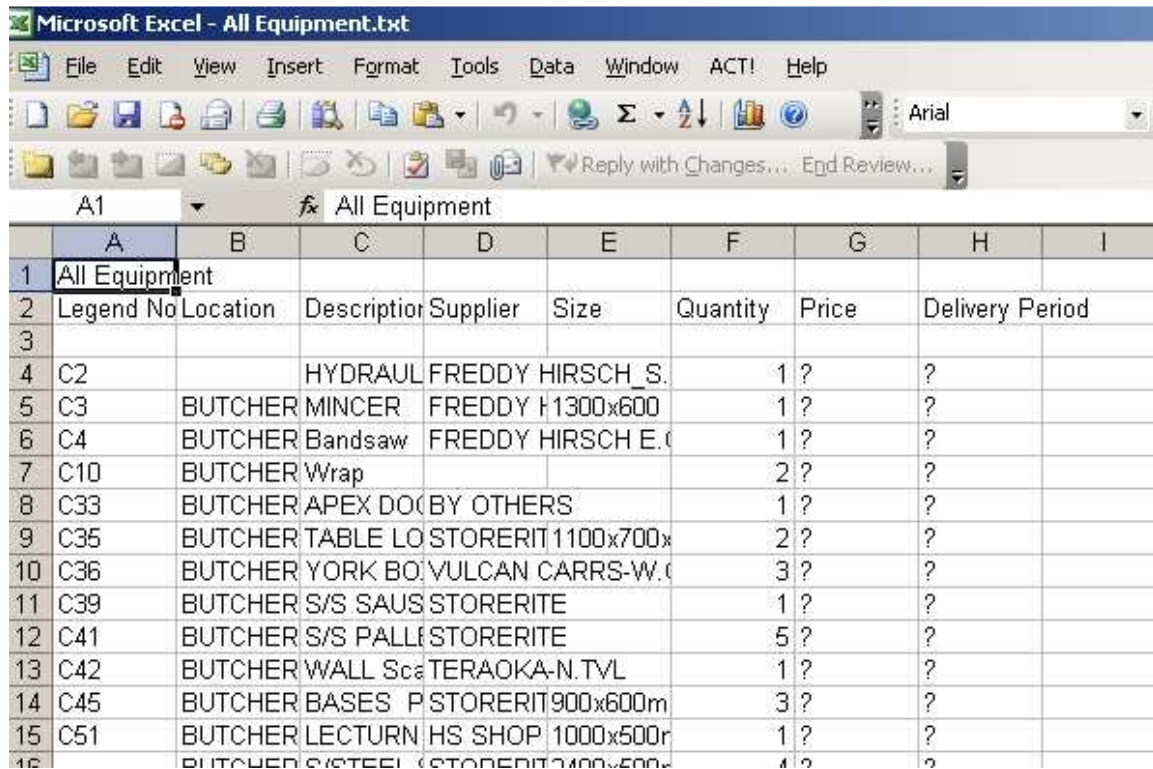
Step 4:

Open the file by right clicking on it and going open with. If you don't already have Microsoft Office Excel available, select choose program and find it so that we can open it with excel.



Step 5:

Once open you should have something similar to the view below :



Legend No	Location	Description	Supplier	Size	Quantity	Price	Delivery Period
C2		HYDRAUL	FREDDY HIRSCH_S.		1	?	?
C3	BUTCHER	MINCER	FREDDY H	1300x600	1	?	?
C4	BUTCHER	Bandsaw	FREDDY HIRSCH E.		1	?	?
C10	BUTCHER	Wrap			2	?	?
C33	BUTCHER	APEX DO	BY OTHERS		1	?	?
C35	BUTCHER	TABLE LO	STORERIT	1100x700x	2	?	?
C36	BUTCHER	YORK BO	VULCAN CARRS-W.		3	?	?
C39	BUTCHER	S/S SAUS	STORERITE		1	?	?
C41	BUTCHER	S/S PALL	STORERITE		5	?	?
C42	BUTCHER	WALL Sca	TERAOKA-N.TVL		1	?	?
C45	BUTCHER	BASES P	STORERIT	900x600m	3	?	?
C51	BUTCHER	LECTURN	HS SHOP	1000x500r	1	?	?
C52	BUTCHER	SYSTEM	STORERIT	1400x500	1	?	?

What you need to do now is select the elements you want to monitor. These are the elements that are the most important to your QS. Go Edit>Copy which will then be have a selected field around it.

4	C2	HYDRAUL FREDDY HIRSCH_S	1
5	C3	BUTCHER MINCER FREDDY F 1300x600	1
6	C4	BUTCHER Bandsaw FREDDY HIRSCH E.C	1
7	C10	BUTCHER Wrap	2
8	C33	BUTCHER APEX DO(BY OTHERS	1
9	C35	BUTCHER TABLE LO STORERIT 1100x700x	2
10	C36	BUTCHER YORK BO.VULCAN CARRS-W.C	3
11	C39	BUTCHER S/S SAUS STORERITE	1
12	C41	BUTCHER S/S PALLI STORERITE	5
13	C42	BUTCHER WALL ScE TERAOKA-N.TVL	1
14	C45	BUTCHER BASES P STORERIT 900x600m	3
15	C51	BUTCHER LECTURN HS SHOP 1000x500r	1
16		BUTCHER S/STEEL : STORERIT 2400x500r	4
17	D02	DELI Chicken w COMBIBAKE SYTEM	1
18	D08a	DELI CONVOTH-ALLIED ;C 900w x804	1
19	D14b	DELI FLY CATCELMICO PEST PREV	3
20	D17-12ft	DELI 12' person: COLCAB REFRIGER,	1
21	D20	DELI HEAT SE/BG TRADING-788-72E	1
22	D22	DELI SCALE wil TERAOKA W.CAPE	2
23	D24	DELI SHELF-MI TROLLEY GUIP Trolle	13
24	D27	DELI SHRINKW STICHT ENGINEER	1
25	D32a	DELI TABLE-PF VALCA;DL 1200x600x	1
26	D33	DELI TABLE-PF VULCAN;L 1650x600x	3
27	D38	DELI CHICKEN BARBERC 1065w x11	1
28	D48_LHS	DELI TABLE WI DU PREE; 1650x750x	2
29	D50	DELI TABLE-PF VULCAN;C 900x600	4

Step 6:

You will now go to the new Excel book or the QS's excel book and go Edit>Paste Special. You will then select Paste Link. This is the most important step in the whole process. You could say it is the magic required for the process to work.



Step 7:

The last step is just to test it really. The QS will now be able to create his own cells of information and calculations based upon what information is there. Just keep in mind that when you export from Revit again it will update the txt file. It doesn't add information after your current information; it will add the information in its own format. You now know how to do this and hopefully it will be as useful to you as it was to me.

Clinton Wernars